

24" X 24" MASONRY PILASTER DETAIL

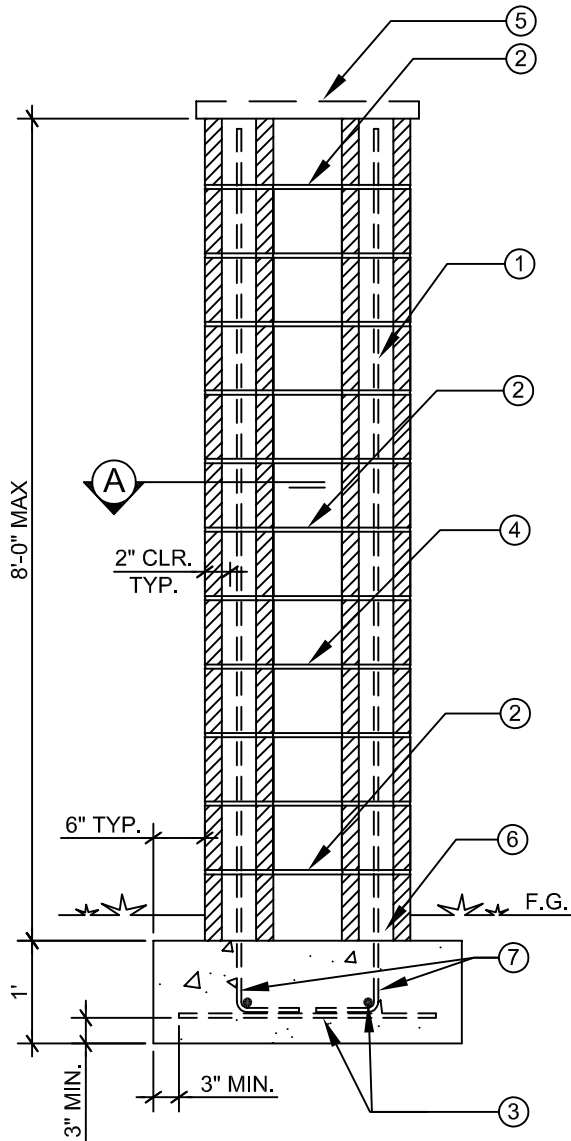
2018 IBC

Clark County
Dept. of Building & Fire Prevention
4701 W Russell Rd
Las Vegas, NV 89118
(702) 455-3000

Boulder City
Building Department
401 California Avenue
Boulder City, NV 89005
(702) 293-9282

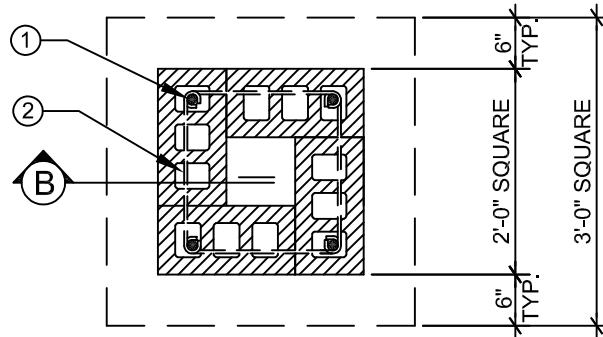
Henderson
Building & Fire Safety Dept.
240 Water Street
Henderson, NV 89015
(702) 267-3650

Las Vegas
Building & Safety Dept.
333 N. Rancho Drive
Las Vegas, NV 89106
(702) 229-6251



SECTION 'B'

NTS



SECTION 'A'

NTS

GENERAL NOTES:

1. ALL WORK SHALL CONFORM TO THE 2018 IBC WITH SNA.
2. CONCRETE MASONRY SHALL COMPLY WITH THE FOLLOWING:
 - A. ASTM C 90, F'm = 1,500 PSI
 - B. MORTAR: TYPE M OR S, 1800 PSI
 - C. GROUT SHALL CONFORM TO ASTM C 476, 2000 PSI MIN.
3. FOUNDATION CONCRETE SHALL BE 4,500 PSI, TYPE V CEMENT AND 0.45 WATER TO CEMENT RATIO
4. ALL REINFORCING STEEL SHALL BE INTERMEDIATE GRADE ASTM A615-40.
5. LAP VERTICAL STEEL 24 INCHES MINIMUM.
6. SITE PLAN SHALL BE SUBMITTED FOR REVIEW BEFORE THE BUILDING PERMIT CAN BE ISSUED.

KEYNOTES: (#)

- ① - #4 VERTICAL REBAR AT EACH CELL CORNER, SOLID GROUTED
- ② - #3 REBAR, TIE IN MINIMUM 8-INCH BOND BEAM AT TOP, MIDDLE, AND BOTTOM. PROVIDE A 2-INCH MINIMUM GROUT COVER AT ALL SIDES OF REBAR.
- ③ - (2) #4 CONTINUOUS REBAR EACH WAY
- ④ - LINE OF CMU GROUT BEYOND
- ⑤ - FINISH TOP OF COLUMN WITH A CAP BLOCK OR WITH CONCRETE FOR WATER RUN-OFF.
- ⑥ - GROUT ALL CELLS AND CAVITIES SOLID BELOW GRADE.
- ⑦ - STANDARD 90° HOOK WITH 9" MIN., LENGTH

Mesquite
Building Department
10 East Mesquite Blvd.
Mesquite, NV 89027
(702) 346-2835

North Las Vegas
Building & Fire Safety
2250 Las Vegas Blvd. N
N. Las Vegas, NV 89030
(702) 633-1577

Pahrump
Building & Fire Safety Dept.
250 N Hwy 160 Suite #3
Pahrump, NV 89060
(775) 751-3373